

# Camden Council Top Level Structure Chart

Chief Executive  
**Jenny Rowlands**

Deputy Chief Executive and  
Executive Director  
Supporting People  
**Martin Pratt**

Executive Director  
Supporting  
Communities  
**Gillian Marston**

Executive Director  
Corporate Services  
**Jon Rowney**

Director of  
People and  
Inclusion  
**Joanna Brown**

Director of  
Participation,  
Partnerships and  
Communications  
**Kathryn Myers**

Borough  
Solicitor  
**Andrew  
Maughan**

Director of  
Public Health  
**Kirsten  
Watters**

Director of  
Equalities and  
Disproportionality  
**Hanad  
Mohamed**

Director of  
Corporate  
Strategy and  
Policy Design  
**Nick Kimber**

Director of  
Adult and  
Social Care  
**Jess  
Mcgregor**

Director of  
Economy,  
Regeneration,  
and Investment  
**David Burns**

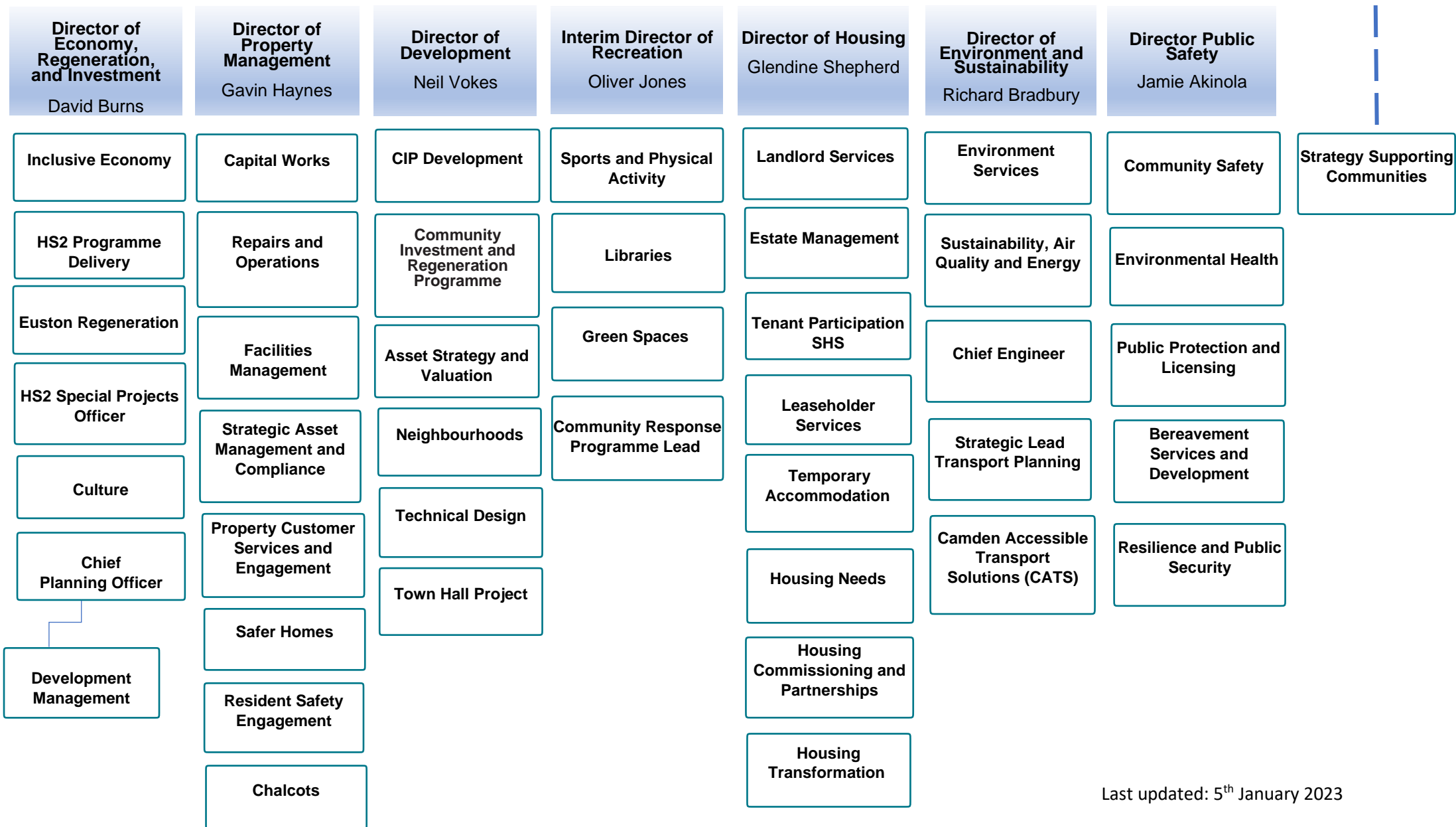
# Executive Director Corporate Services

Jon Rowney [Section 151 Officer]

Corporate Strategy and Policy Design Nick Kimber	Participation, Partnerships and Communications Kathryn Myers	Chief Digital and Information Officer Tariq Khan	Borough Solicitor, Law, Governance and Procurement [Monitoring Officer] Andrew Maughan	People & Inclusion Jo Brown (reporting to CE)	Finance Daniel Omisore	Customer Services Kate Robertson	Equality and Community Strength Hanad Mohamed
Policy Design	Strategic Communications	Digital Products and Services	Principal Lawyers	HR Strategic Leads	Finance, Corporate Services	Parking Operations	Equalities and Systems Change Lead
Corporate Strategy	Media & External Relations	Chief Data Officer	Business Support	Organisational Development and Learning and Development	Finance, Supporting Communities	Customer and Registration Services	Community Partnerships
Lead Delivery Manager	Participation and Partnerships	Applications and Business Solutions	Committee Services	Specialist HR Advice (Pay, Policy and Equality)	Finance, Supporting People	Council Tax, Business Rates and Benefits	Strategic Lead
	Cabinet Office	Operations	Electoral Services	Health & Safety	Treasury and Financial Transactions	Credit Control	
	Member Support	Technology	Mayor's Office	Employee Relations	Internal Audit and Risk		
	Chief Executive Office		Procurement and Social Value	Resourcing			

# Executive Director Supporting Communities

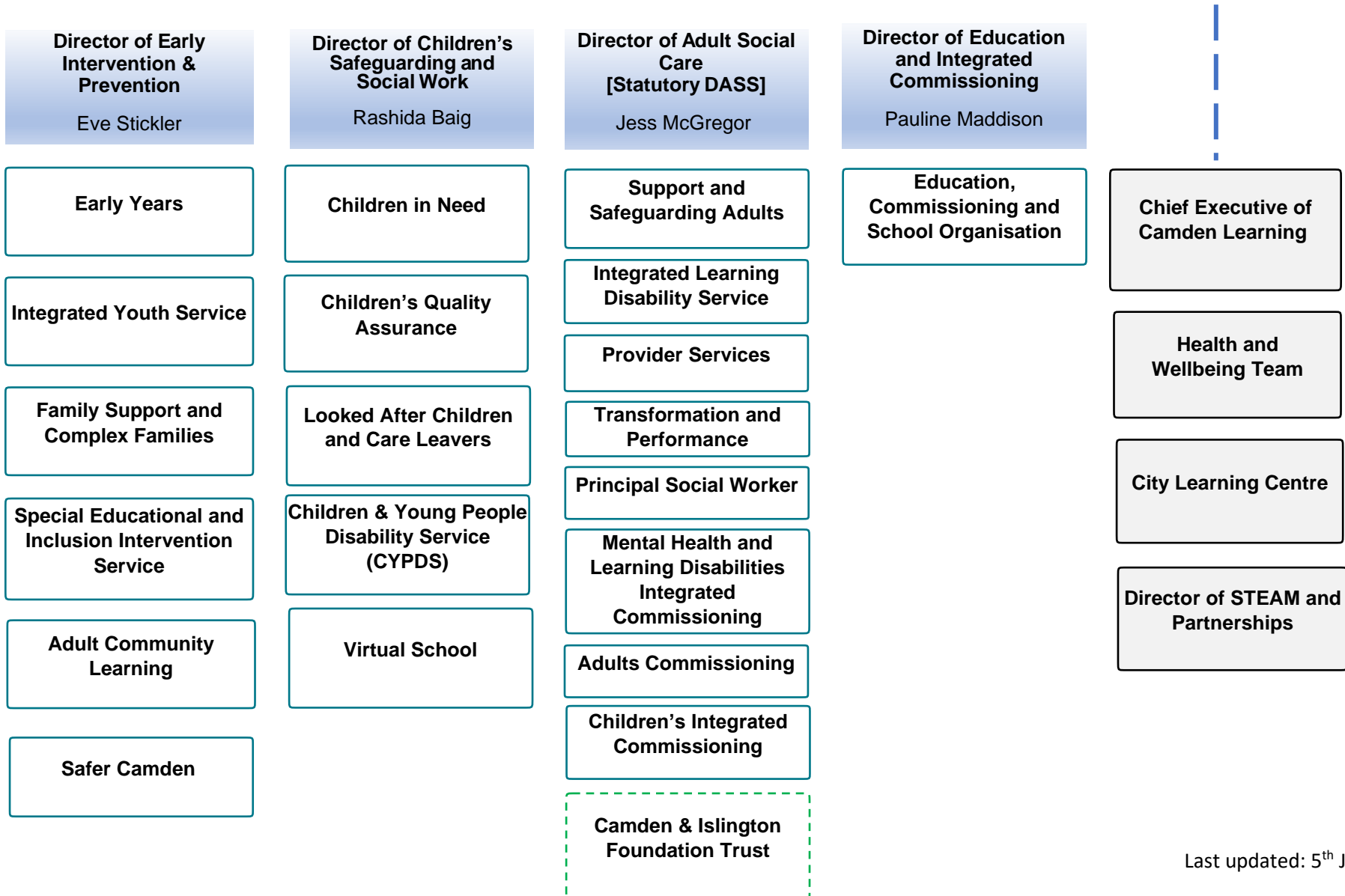
Gillian Marston



Last updated: 5<sup>th</sup> January 2023

# Deputy Chief Executive & Executive Director Supporting People [statutory DCS]

Martin Pratt



**Public Health Directorate Management Team (DMT)**  
**Directors of Public Health**  
Shared Service with Islington  
Kirsten Watters (Camden) and Jonathan O'Sullivan (Islington)

**Public Health  
Consultant  
Intelligence Lead**

**Public Health  
Consultant  
Healthy Behaviours &  
Lifestyle**

**Public Health  
Consultant  
Health & Care  
Intelligence**

**Public Health  
Consultant  
Mental Health &  
Wider Determinants**

**Public Health  
Consultant  
Older Adults, Long-  
term Conditions &  
The Core Offer**

**Public Health  
Consultant  
Heavy Weight &  
Physical Activity**

**Public Health  
Consultant  
Children & Young  
People**